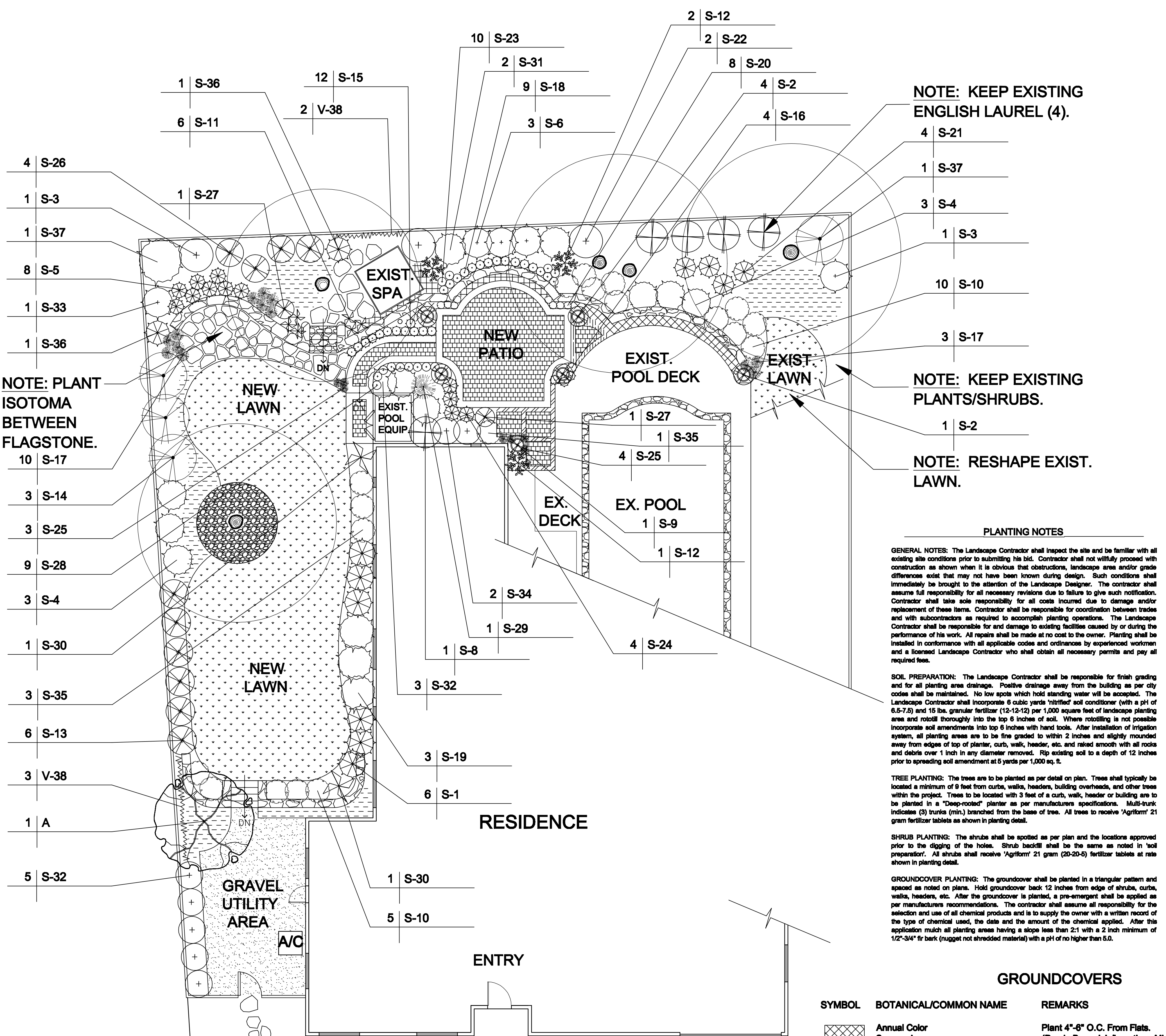


NO. REVISIONS/DATE BY		
#1	10/3/2009	BJD



NOTE: PLANT ISOTOMA BETWEEN FLAGSTONE.

NOTE: KEEP EXISTING ENGLISH LAUREL (4).

NOTE: KEEP EXISTING PLANTS/SHRUBS.

NOTE: RESHAPE EXIST. LAWN.

GENERAL NOTES: The Landscape Contractor shall inspect the site and be familiar with all existing site conditions prior to submitting his bid. Contractor shall not willfully proceed with construction as shown when it is obvious that obstructions, landscape area and/or grade differences exist that may not have been known during design. Such conditions shall immediately be brought to the attention of the Landscape Designer. The contractor shall assume full responsibility for all necessary revisions due to failure to give such notification. Contractor shall take sole responsibility for all costs incurred due to damage and/or replacement of these items. Contractor shall be responsible for coordination between trades and with subcontractors as required to accomplish planting operations. The Landscape Contractor shall be responsible for and damage to existing facilities caused by or during the performance of his work. All repairs shall be made at no cost to the owner. Planting shall be installed in conformance with all applicable codes and ordinances by experienced workmen and a licensed Landscape Contractor who shall obtain all necessary permits and pay all required fees.

SOIL PREPARATION: The Landscape Contractor shall be responsible for finish grading and for all planting area drainage. Positive drainage away from the building as per city codes shall be maintained. No low spots which hold standing water will be accepted. The Landscape Contractor shall incorporate 6 cubic yards 'nitrified' soil conditioner (with a pH of 6.5-7.5) and 15 lbs. granular fertilizer (12-12-12) per 1,000 square feet of landscape planting area and rototill thoroughly into the top 6 inches of soil. Where rototilling is not possible incorporate soil amendments into top 6 inches with hand tools. After installation of irrigation system, all planting areas are to be fine graded to within 2 inches and slightly rounded away from edges of top of planter, curb, walk, header, etc. and raked smooth with all rocks and debris over 1 inch in any diameter removed. Rip existing soil to a depth of 12 inches prior to spreading soil amendment at 5 yards per 1,000 sq. ft.

TREE PLANTING: The trees are to be planted as per detail on plan. Trees shall typically be located a minimum of 9 feet from curbs, walks, headers, building overhangs, and other trees within the project. Trees to be located with 3 feet of a curb, walk, header or building are to be planted in a "Deep-rooted" planter as per manufacturers specifications. Multi-trunk indicates (3) trunks (min.) branched from the base of tree. All trees to receive 'Agriform' 21 gram fertilizer tablets as shown in planting detail.

SHRUB PLANTING: The shrubs shall be spotted as per plan and the locations approved prior to the digging of the holes. Shrub backfill shall be the same as noted in 'soil preparation'. All shrubs shall receive 'Agriform' 21 gram (20-20-5) fertilizer tablets at rate shown in planting detail.

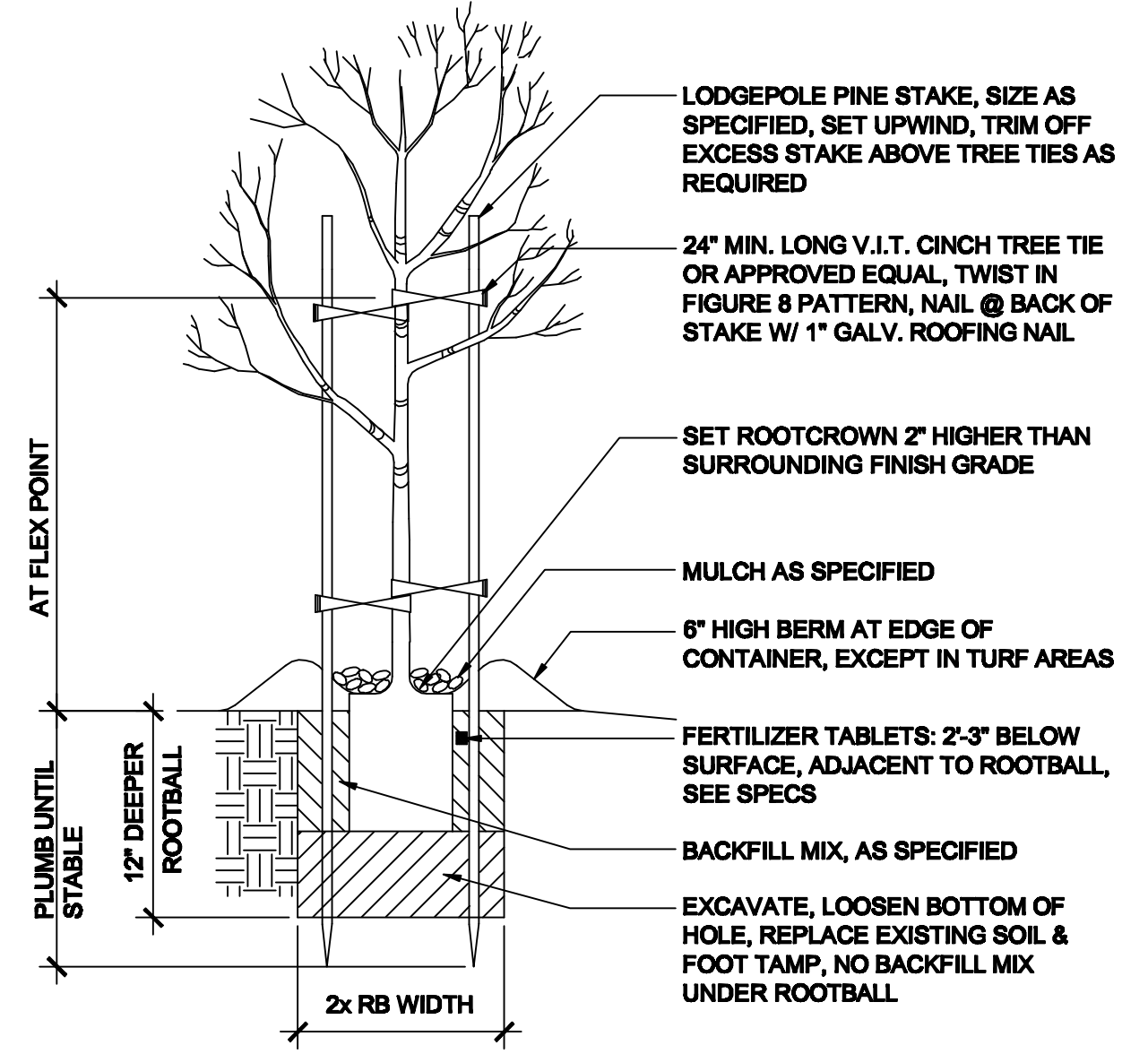
GROUNDCOVER PLANTING: The groundcover shall be planted in a triangular pattern and spaced as noted on plans. Hold groundcover back 12 inches from edge of shrubs, curbs, walks, headers, etc. After the groundcover is planted, a pre-emergent shall be applied as per manufacturers recommendations. The contractor shall assume all responsibility for the selection and use of all chemical products and is to supply the owner with a written record of the type of chemical used, the date and the amount of the chemical applied. After this application mulch all planting areas having a slope less than 2:1 with a 2 inch minimum of 1/2"-3/4" fir bark (nugget not shredded material) with a pH of no higher than 5.0.

GROUNDCOVERS

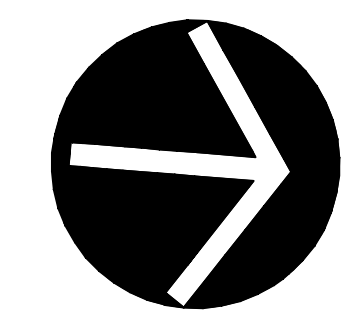
SYMBOL	BOTANICAL/COMMON NAME	REMARKS	QUANTITY
	Annual Color Seasonal	Plant 4"-6" O.C. From Flats. (Purple Begonia's/Impatiens Mix)	3 Flats.
	Campanula Muralis Dalmatian Bellflower	Plant 12" O.C. From Cell-Paks.	2 Flats.
	Dwarf Fescue Sod Lawn	(95/5 Blend)	1295 Sq.Ft.
	Isotoma Fluviatilis Blue Star Creeper	Plant Between Flagstone and Pavers.	6 Flats.
	Sagina Subulata Scotch Moss	Plant 6" O.C. From Flats.	2 Flats.
	Vinca Minor Dwarf Periwinkle	Plant 12" O.C. From Cell-Paks.	6 Flats.

PLANT LIST

SYMBOL	BOTANICAL NAME	COMMON NAME	SIZE	QTY
TREES				
A	Cercis Canadensis 'Forest Pansy' (Low Branch)	Eastern Redbud	24" Box	1
SHRUBS & PERENNIALS				
S-1	Abelia x grandiflora 'Sun Rise'	Sherwood Abelia	5 Gal	6
S-2	Abutilon Hybridum (Pink-Standard)	Tree Flowering Maple	5 Gal	5
S-3	Abutilon Hybridum (Yellow)	Flowering Maple	5 Gal	2
S-4	Azalea Southern Indica 'Little John'	Sun Azalea	5 Gal	6
S-5	Azalea Southern Indica 'White Lace'	Sun Azalea	5 Gal	8
S-6	Camellia Sasanqua 'Jean May'	NCN	5 Gal	3
S-7	VOID	VOID	VOID	0
S-8	Ceanothus 'Ray Hartman'	Mountain Lilac	5 Gal	1
S-9	Cordyline 'Electric Pink'	Electric Pink Dracaena Palm	5 Gal	1
S-10	Correa 'Wyn's Wonder'	Australian Fuchsia	5 Gal	15
S-11	Crocosmia Masoniorum 'Emily McKenzie'	Montbretia	1 Gal	6
S-12	Daphne Odora 'Marginata'	Winter Daphne	5 Gal	3
S-13	Dodonaea Viscosa 'Saratoga'	Hopseed Bush	5 Gal	6
S-14	Feijoa Sellowiana	Pineapple Guava	5 Gal	3
S-15	Geranium Himalayense x. 'Johnson's Blue'	Johnson's Blue Cranesbill	1 Gal	12
S-16	Geranium Sanguineum	Bloody Cranesbill	1 Gal	4
S-17	Hemerocallis Hybrid 'Shady Lady'	Daylily	1 Gal	13
S-18	Heuchera 'Silver Scrolls'	NCN	1 Gal	9
S-19	Hibiscus Syriacus 'Blushing Bride'	Rose Of Sharon	5 Gal	3
S-20	Houttynia Cordata 'Chameleon'	NCN	1 Gal	8
S-21	Hydrangea Macrophylla 'Blue Wave'	Blue Wave Lace Cap Hydrangea	5 Gal	4
S-22	Hydrangea Quercifolia 'Snowflake'	Oakleaf Hydrangea	5 Gal	2
S-23	Lamium Maculatum 'Beedham's White'	Dead Nettle	1 Gal	10
S-24	Lavandula Angustifolia 'Hidcote'	Dwarf English Lavender	1 Gal	4
S-25	Liriope Muscari 'Silvery Sunproof'	Big Blue Lily Turf	1 Gal	7
S-26	Loropetalum Chinese 'Plum Delight'	NCN	5 Gal	4
S-27	Mimulus 'Eleanor'	Monkeyflower	1 Gal	2
S-28	Ophiopogon Japonicus	Mondo Grass	1 Gal	9
S-29	Pennisetum Setaceum 'Cupreum'	Red Fountain Grass	1 Gal	1
S-30	Phormium Tenax 'Sundowner'	New Zealand Flax	5 Gal	2
S-31	Pteris Japonica 'Mountain Fire'	Lily Of The Valley Shrub	5 Gal	2
S-32	Pittosporum Tenuifolium 'Marjorie Channon'	NCN	5 Gal	8
S-33	Rhododendron 'Trude Webster'	NCN	5 Gal	1
S-34	Rosa Floribunda 'Living Easy'	Rose	5 Gal	2
S-35	Salvia Leucantha	Mexican Bush Sage	5 Gal	4
S-36	Sarcococca Ruscifolia	NCN	5 Gal	2
S-37	Viburnum Plicatum Plicatum	Japanese Snowball	5 Gal	2
VINES				
V-38	Clytostoma Callistegioides	Lavender Trumpet Vine	5 Gal	5



TREE PLANTING DETAIL
NO SCALE



PLANTING PLAN

Brad Dodge Designs
Landscape Designer
(510) 499-7546
brad@braddodgedesigns.com
www.braddodgedesigns.com

FALL/JUNG RESIDENCE
11 HIDDEN VALLEY ROAD
LAFAYETTE, CA

DRAWING BY Brad J. Dodge
CHECKED
DATE 9/12/2009
SCALE 1/8"=1'-0"
JOB NO.
SHEET L-2
OF 2 SHEETS